



Wirral Council
Department of Regeneration
Parks and Countryside Service

Elleray Park
Management Plan
&
Security Audit

2007 – 2012

DRAFT



Contents

1) Introduction and vision

2) The wider policy context

3) Site information

4) Analysis and assessment including Security Audit

5) Aims and objectives

6) Action plan

7) Monitoring and review

8) Appendix

1) Introduction and vision

Wirral Council produced this management plan. The plan is intended to provide a framework for the development and improvement of the park over the next five year period up to 2012. The plan is intended to be a working document, which is open to new ideas at any time. We welcome your suggestions and comments for incorporation into this plan, whether you are a local resident, user or organisation. Your input will help us to develop a park that meets everyone's needs and aspirations.

If you wish to find out further information about this document or submit any suggestions please contact **Peter Whittle** in the Parks and Countryside Service at Wirral Council on 0151 666 4713 or by email at peterwhittle@wirral.gov.uk alternatively, you can contact Peter Whittle by writing to:

Parks and Countryside, Wirral Council, Westminster House, Birkenhead, Wirral, Merseyside, CH41 5FN.

Departmental Mission Statement:

'Promoting a healthy, safer lifestyle and improving the quality of life for all'.

Aims:

- *To enable sustainable, economic, social, neighbourhood and environmental regeneration*
- *To improve the health and well being of Wirral residents*
- *To promote opportunities for personal, community and business development*

2) The wider policy context and its relevance to the park

Wirral Council has produced 9 corporate objectives:

- PROTECTING AND IMPROVING OUR ENVIRONMENT
- PROMOTING AND SUPPORTING THE ECONOMIC REGENERATION OF WIRRAL
- PROVIDING EDUCATIONAL AND CULTURAL OPPORTUNITIES FOR ALL
- IMPROVING THE HEALTH OF WIRRAL PEOPLE
- MAKING WIRRAL SAFER
- MEETING THE HOUSING NEEDS OF WIRRAL
- SUPPORTING AND PROTECTING VULNERABLE PEOPLE
- IMPROVING TRANSPORT
- CONTINUOUSLY IMPROVING SERVICES

The **Parks and Countryside Service Plan 2007/08** sets out the targets for the Service within the context of the above corporate objectives and the **Regeneration Departmental Service Plan for 2007/08**.

3) Site information

Name: Elleray Park

Grid Reference: 330131, 393169

Primary classification: Local Park

Address: Hose Side Road

Ward: Wallasey

Size: 1.741 Hectares

Existing facilities and features:

- Mature tree stock
- Open grass area
- Seating

Tenure: The site is owned and managed by the Parks and Countryside Service of Wirral Council's Department of Regeneration.

Summary of main uses:

- Dog walking
- Ball games

Partner organisations:

Merseyside Police
Wirral Council's Community Safety Team

Access:

All entrance points are suitable for wheelchair users.
The park is located near to a bus route with a stop located on Warren Drive.
The nearest rail station is Wallasey Grove Road located 1.09Km from the park.

Resources:

- Area Manager and Assistant Manager (based at Central Park)
- A range of horticultural machinery and tools
- Annual revenue budget
- Visiting maintenance staff

- Visiting forestry team

Summary of the known problems

- Problems for neighbouring residents associated with the mature trees situated close to the boundary with Stoneby Drive
- Deterioration in condition of the sites perimeter sandstone walling
- Rope swings are regularly hung from trees

Staff and their functions

Maintenance personnel visit the park to perform grass cutting, litter removal and seasonal tree work.

The Area Parks Manager and the Assistant Area Parks Manager are responsible for the management of the park. The area grounds maintenance depot is located at Central Park, Liscard Road, Wallasey tel. 638 5608.

Skill gaps

The Parks and Countryside Service Plan 2007/08 recognises that a skill gap currently exists within the division's operational staffing, in consequence three main aims have been identified in order to address the issue:

- 1) Review Parks Modern apprentice scheme
- 2) Produce a staff training action plan
- 3) Improve training for parks staff in biodiversity and conservation awareness

Stakeholders

- The site does not have a recognisable community or user group

What standards are management trying to achieve?

The intention is for the park to achieve the standards as defined by the Green Flag Award Scheme.

4) Analysis and assessment

As with many parks across the country, a decline in investment in green space over previous decades has seen maintenance standards the condition of facilities and infrastructure within municipal parks decline.

The current condition of the Park has been assessed using the following criteria as defined by the Civic Trust's Green Flag Award scheme:

- i. A welcoming park
- ii. Healthy, safe and secure
- iii. Clean and maintained
- iv. Sustainability
- v. Conservation and heritage
- vi. Community involvement
- vii. Marketing
- viii. Management

i) A welcoming park

The park has two entrance points, one situated on Hose Side Road and one on Elleray Park Road



Hose Side Road entrance



Elleray Park Road entrance

The only signage provided are two prohibitive notices, one 'no golf' sign and one 'clean it up' sign located at the Elleray Park Road entrance, and an adjacent litterbin is of poor appearance.

A pedestrian barrier rail has been installed across the width of the Hose Side Road entrance to prevent children inadvertently running from the park into the road.

The surface of the footpath, which extends through the park, is in good condition.

ii) Healthy, safe and secure

The park is covered under the Fouling of Land Act 1996; this act makes it an offence not to clean up in a public area if a dog under your control does foul. Powers to enforce £50 fixed penalty notices on offenders were extended to include Wirral's Community Patrol Officers in August 2007, a media campaign 'Don't give a dog a bad name' will be launched to highlight the new powers.

Wirral Council's policy regarding dog fouling is to encourage responsibility in dog ownership and owners are expected to clean up after their pets, dedicated dog waste bins are not provided; dog waste can be deposited into the Borough's litterbins consequently becoming incorporated with general

waste this does not then entail the problems associated with disposal of faeces only bins.

The Park is designated a 'canine faeces removal area'; however dog fouling was apparent throughout the park, signs are in place at entrance points indicating the park is a 'clean it up' area. Many dog walkers use the park's litterbins for the disposal of removed faeces.

Wirral Council operates a 24 hour Community Patrol force, established to provide a response to any concern notified to them regarding anti-social behaviour occurring within Council owned land. The Patrol can be contacted on telephone number 666 5265

Parks and Countryside are represented on the Junior Joint Agency Group (JAG), a forum consisting of the following agencies Merseyside Police, Community Safety, Youth and Community. Serious issues regarding security in parks are raised at the meeting with the intention of providing a multi agency approach to addressing any problems.

The park is covered by Byelaws, made under Section 164 of the Public Health Act, 1875,

It is proposed to introduce an annual site Safety Inspection Checklist, the inspection is intended to identify defects within sites that present a safety problem for staff, users and adjacent residents. The checklist requires the appraisal of the following items:

1. Paths, steps, ramps
2. Walls, fences, gates
3. Buildings
4. Furniture – signs, seats, litterbins etc
5. Soft landscape – grass, planted areas, water features etc
6. Trees

A Security Audit was undertaken by Peter Whittle, the park was assessed under the following criteria:

- a) Sight-line visibility
- b) What evidence is apparent of anti-social behaviour or undesirable activity in the park?
- c) Motor vehicles
- d) The park at night
- e) Pathways, pedestrian routes
- f) Boundaries
- g) Is the park well maintained?

a) Sight-line visibility

The park provides good visibility throughout; neighbouring properties in Stoneby Drive and Elleray Park Road overlook the park.

b) What evidence is apparent of anti-social behaviour or undesirable activity in the park?

Some graffiti was apparent to the seating in the park.

Children/young people use the trees in the park to hang rope swinging.

Occasional damage occurs to the boundary walling, coping stones for example have been pushed off

c) Motor vehicles

There are no problems associated with the unauthorised access of motor vehicles into the site

d) The park at night

The park is unlit, the only available lighting is situated on the adjacent boundary roads neighbouring the park, illumination from the lamp columns over-spills into the periphery of the park.

Wirral Council neither encourages nor discourages the nighttime use of the park.

Incident reports compiled by Wirral Council's Community Patrol are made available to the Parks and Countryside Service and are provided to the Area Parks Manager; no assessment is currently made of this available data in order to establish the types and frequencies of incidents occurring.

Anecdotally it is assumed that the majority of incidents associated with youths causing annoyance and anti social behaviour take place between 18:00 hrs and 21:00 hrs during Fridays and Saturdays predominately in the spring and summer months.

e) Pathways, pedestrian routes

The surface condition of the footpath that extends through the length of the site connecting the two entrance points is good.

f) Boundaries

Neighbouring properties situated in both Elleray Park Road and Stoneby Drive overlook the park.

The boundary to Elleray Park Special School is defined by 1.8m high steel security fencing.

iii) Clean and well maintained

Horticultural maintenance is carried out in accordance with a frequency based work programme allied to a specification. The work programme or “job card” is issued to staff on a quarterly basis; these are used for identifying all maintenance operations on the site for the period. Currently these documents are not being fully utilised and are under review.

The maintenance regime is carried out to meet general standards set out in a Borough-wide grounds maintenance ‘frequency based’ specification. The specification sets out corporate standards of maintenance.

There are no site-based members of staff, however, a mobile team carry out operations within the park, supported by a swing fitter operative.

The Senior Park Development Officer has carried out an assessment of the current maintenance condition of the park under the following 13 headings. The facilities and features are simply categorised as good, fair or poor and can only represent findings at the time of writing.

Grounds maintenance site checklist

Park	Elleray Park			
Date	2006			
Grass	Good	Fair	Poor	
Fine Sport	N/A	N/A	N/A	
Playing Fields	N/A	N/A	N/A	
Ornamental	N/A	N/A	N/A	
General			√	
Rough	N/A	N/A	N/A	
Wild Flower Area	N/A	N/A	N/A	

Planting	Good	Fair	Poor	
Annual	N/A	N/A	N/A	
Herbaceous	N/A	N/A	N/A	
Roses	N/A	N/A	N/A	
Shrubs	N/A	N/A	N/A	
Hedges	N/A	N/A	N/A	
Young staked trees / semi-mature trees		√		
Mature Trees		√		
Woodland	N/A	N/A	N/A	

Hard Surfaces	Good	Fair	Poor	
Tarmac Sport	N/A	N/A	N/A	
Hard Porous	N/A	N/A	N/A	
Footpaths	√			
Drives	N/A	N/A	N/A	
Car Parks	N/A	N/A	N/A	

ACW / ATP	N/A	N/A	N/A
Steps	N/A	N/A	N/A

Play Areas	Good	Fair	Poor
Maintenance	N/A	N/A	N/A

Litter	Good	Fair	Poor
Collection			√
Bins		√	

Buildings	Good	Fair	Poor
Repair / Maintenance	N/A	N/A	N/A
Graffiti	N/A	N/A	N/A

Fencing	Good	Fair	Poor
Repair / Maintenance	N/A	N/A	N/A

Walling	Good	Fair	Poor
Maintenance		√	
Graffiti	√		

Drainage	Good	Fair	Poor
Ditches	N/A	N/A	N/A
Inspection Chambers / Covers	N/A	N/A	N/A
Gully pots	N/A	N/A	N/A

Signage	Good	Fair	Poor
Repair / Maintenance		√	
Graffiti		√	

Furniture / Memorials	Good	Fair	Poor
Repair / Maintenance		√	
Graffiti			√

Lighting	Good	Fair	Poor
Maintenance	N/A	N/A	N/A

Water	Good	Fair	Poor
Maintenance	N/A	N/A	N/A
Safety	N/A	N/A	N/A

It is apparent that operational factors extending beyond the influence of this management plan require consideration in order to improve the overall standard of grounds maintenance. The main issues for further consideration should include staff management (i.e. motivation, supervision and training) coupled with resourcing (i.e. revenue funding, machinery and materials).

Generally Eleray Park receives a fair standard of maintenance although the standard of grass care needs to be improved. It is intended to bring all horticultural operations up to a good standard within the plan period.

No assessment has been made regarding the condition of the parks tree stock, a programme of seasonal tree work is prepared by the Area Manager, often in response to public request.

iv) Sustainability

Green waste generated at the park is not currently composted and reused on the site other than tree brush, which is chipped and stored at Central Park depot for reuse as mulch.

Pesticide usage at the park is confined to non-residual Herbicide for the control of weed growth on pathways.

C.O.S.H.H. assessment records of the chemical based products used within the park form part of the Departments ISO 9002 Quality Assurance procedures. Pesticide records are retained at the district depot (Central Park). Chemical storage and usage within the park complies with the requirements defined within the current pesticide handling legislation.

Motorised mowing equipment used at the park is checked for emission levels.

v) Conservation and heritage

A short report on the bio-diversity potential of the site to be produced by the Parks Development Officer

The mature tree stock and boundary sandstone walling are the main heritage features of the park. No assessment of the trees has been made.



The condition of the park's boundary sandstone walling is not assessed on a regular basis. The walling and mature tree stock represents the parks most significant heritage features.

vi) Community involvement

Currently the park does not have the benefit of a recognised local park user group.

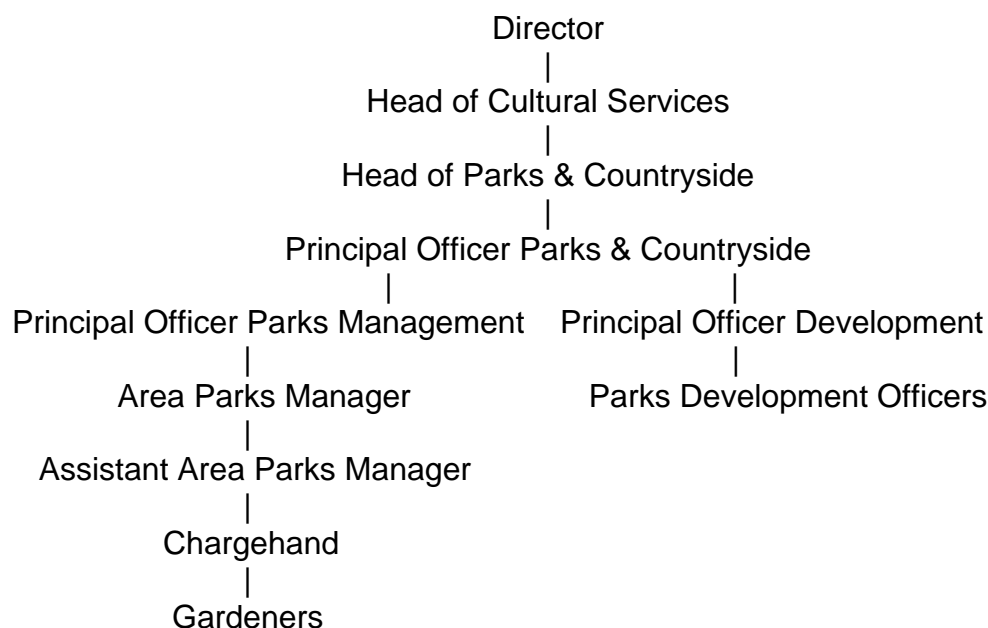
The park does not host any community-organised events.

vii) Marketing

The Wirral Council internet web site, www.wirral.gov.uk, has links to the Parks and Countryside Service's information. No information regarding Elleray Park is presently available on the site. The site is not currently marketed.

viii) Management

Following re-organisation of The Parks & Countryside Service in 2004 the following management structure was put in place.



5) Aims and objectives

Aim: To make the park more welcoming

Objectives:

- Provide signage at both entrance points with contact information and prohibitive notices
- Replace litter bins
- Re-paint seating
- Re-paint pedestrian barrier rail to Hose Side Road entrance

Aim: To make the park healthy, safe and secure

Objectives

- Restencil 'clean it up' signs on surfacing at entrance points
- Respond quickly to any incidents of vandalism and graffiti
- Remove all rope swings from trees and check regularly
- Undertake annual site safety inspection
- Ensure regular litter collection from the site and the removal of broken glass
- All incidents of anti-social behaviour occurring in the park should be reported to the neighbourhood police, this should include incidents of under-age consumption of alcohol and drug taking. Monitor incident reports to establish levels and types of problems occurring in order to better determine an appropriate response

Aim: To improve the overall maintenance standard of the park

Objectives:

- Achieve the standard as defined by the Green Flag Award scheme
- To bring all maintenance standards to good within the plan period
- Carry out remedial tree pruning / removal as required and inspect annually
- Carryout a survey of the tree stock within the park and produce woodland management plan
- Spade edge grass along either side of footpath annually
- Undertake annual removal of leaf fall

Aim: To improve environmental sustainability in the park

Objectives:

- Undertake environmental audit and report
- Continue to reduce and minimise pesticide usage
- Review waste handling, ensure all green waste is recycled
- Consider installation of cycle racks to encourage alternative transport

Aim: To improve the parks conservation and heritage value

Objective:

- **Bio-diversity objectives to follow**
- Introduce a programme of phased repair of the sandstone boundary walling

Aim: To increase community involvement in the park

Objective:

- Encourage and support the establishment of a park Friend's Group
- Promote and support the community to use the park as a venue for community initiated events

Aim: To improve the marketing of the park

Objective:

- Improve the available information concerning the site on the Wirral Council internet web site
- Improve site interpretation and signage

Aim: To manage the implementation and review of this plan

Objectives:

- To create a mechanism to actively review both maintenance and developmental improvements

	Action	Responsibility	Target Date	Funding
1. To make the park more welcoming				
1	Provide signs and information boards of appropriate design to both entrance points	Parks Development Officer (PDO)/Area Parks Manager (APM)		Requires additional funding (RAF) £5K
2	Replace litter bins to compatible design with seating	PDO/APM		RAF £10K
3	Repaint seating	APM		Within existing resources (WER)
4	Repaint pedestrian barrier rail to Hose Side Road entrance	APM		WER
2. To make the park healthy, safe and secure				
2.1	Restencil 'clean it up' signs at the two entrance points	APM		WER
2.2	Establish a procedure for the rapid response to incidents of graffiti and other acts of vandalism	APM		WER
2.3	Remove all rope swings from trees and continue to check regularly	APM	Ongoing	WER
2.4	Introduce annual 'Site safety Inspection'	APM	2007 - ongoing	WER
2.5	Improve litter collection including the removal of broken glass from the site	APM	Ongoing	WER
2.6	Monitor levels of anti-social behaviour occurring in the park and establish a procedure for reporting all incidents to Merseyside Police	APM & Partners	Ongoing	WER
3. To improve the overall maintenance standard of the park				
3.1	Achieve the standard as defined by the Green Flag Award scheme	PDO/APM		RAF £5K pa
3.2	Achieve good standard for all horticultural operations within the period of the plan	APM	By 2012	WER
3.3	Undertake remedial tree work	APM	Ongoing	WER
3.4	Initiate tree survey and produce woodland management plan	APM		RAF £5K
3.5	Spade edge along either side of the footpath	APM		WER
3.6	Remove all leaf fall from the park within reasonable timescale	APM & Partners	Ongoing	WER

4. To improve environmental sustainability in the park				
4.1	Continue to minimise pesticide usage in the park	APM	Ongoing	
4.2	Improve waste handling/re-cycling procedures	APM		RAF £1k pa
4.3	Install cycle racks	APM		RAF £1K
5. To improve the park's conservation and heritage value				
5.1	Bio diversity report to follow	PDO		£1K pa
5.2	Introduce a programme of phased repair to the boundary sandstone walling			£5K pa
6. To increase community involvement in the park				
6.1	Develop/ capacity build community, park friends group	PDO		Additional resources may be required
6.2	Support community with park based events			Additional resources may be required
7. To improve the marketing of the park				
7.1	Improve the Wirral Council internet web site	Parks Officer		
7.2	Improve site interpretation and signage	APM		RAF £3K
8. To manage the implementation and review of this plan				
8.1	Introduce mechanism to monitor and review progress of both development and the maintenance of the park	APM		WER

7) Monitoring and Review

There will be a precise a clear process for monitoring both maintenance and development.

The Principal Officer for Parks Management will incorporate progress on Management Plan actions into the monthly management team meetings.

Charge hands will report back on progress or shortfalls to the Area Parks Manager after each visit.

The Area Parks Manager will carryout random inspections of the site between programmed monitoring visits.

The Area Parks Manager will carryout a quarterly inspection of the site with the relevant gardeners to assess maintenance standards and check against the issued work programme and specification.

The Parks Development Officer will carryout a bi-annual site visit with the Area Parks Manager and Friends representatives to oversee the delivery of the Management Plan. The target dates in the five-year action plan will enable people to see how the partnership is making progress and when that action has been achieved.

Appendix.1.



Aerial photograph of Elleray Park